



Architectural Coatings

Mulco Siliconized 100% Acrylic Latex Sealant Interior/Exterior

**GENERAL DESCRIPTION**

Siliconized 100% acrylic latex-based sealant especially formulated to be used indoor or outdoor. Siliconized acrylic latex sealant with excellent adhesion.

**RECOMMENDED SUBSTRATES**

Seals joints around door and window frames, baseboards, countertops, sinks, and around showers or bathtubs (allow 36 hours drying before exposing to moisture).

**FEATURES / BENEFITS**

- Multi-purpose sealant for a variety of common surfaces.
- Cured sealant is mold and mildew resistant.
- Paintable after 24 hours.
- Remains flexible.
- Does not stain surround surfaces.
- Can be applied around showers or bathtubs.

**PRODUCT INFORMATION / PACKAGING**

Mulco 133000 Clear 300 mL Tube  
Mulco 133010 White 300 mL Tube

**LIMITATIONS OF USE****PROTECT FROM FREEZING.**

Not to be applied outside if rain is expected within 24 hours.  
Do not use on floor joints where abrasion will occur.  
Do not apply on bare metal subject to rusting.  
Do not use on areas where silicone or asphalt was previously applied.  
Not intended for joints that will be submerged or exposed to abrasion (foot traffic).  
Does not withstand immersion (tank).  
**Adhesion to materials not specifically mentioned are not guaranteed.**

**PRODUCT DATA**

**COMPOSITION:** Architectural one component Siliconized 100% acrylic latex-based sealant. Dries by solvent evaporation.

**COLOUR:** Consult our colour guide.

**APPEARANCE:** Thixotropic and homogeneous paste, free of lumps and easy to extrude.

**MATERIAL TEMPERATURE:** 10°C to 30°C (50°F to 86°F).

**APPLICATION TEMPERATURE:** 5°C to 30°C (41°F to 86°F).

**SERVICE TEMPERATURE:** -30°C to 50°C (-22°F to 122°F).

**CONSISTENCY:** Non-sag in normal use.

**APPLICATION METHOD:** Caulking gun.

**EXTRUDABILITY:** Easy to gun at room temperature.

**MINIMUM CURE TIME:** 24 hours in most conditions at room temperature.

**DRYING TIME:** Full cure in two weeks.

**COVERAGE:** 8 m for a 7 mm bead.

**FLAMMABILITY\*:** Non-flammable; combustible when dry.

**FLASH POINT\*:** Over 93°C (200°F).

**FREEZE/THAW STABILITY:** Protect from freezing.

**SHELF LIFE:** One year from date of purchase.

**CLEANER (wet product):** Use water.

**CLEANER (dry product):** Remove as much product quantity as possible and clean tools with lukewarm water and soap immediately after use.

**MAX VOC\*:** < 0.20% by weight.

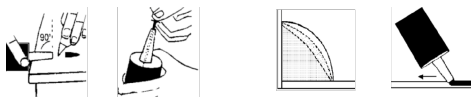
**SPECIFICATIONS:** Meets the characteristics necessary to credit 4.1- « Low-Emitting Materials: Adhesives & Sealants » which refers to SCAQMD, Rule # 1168, January 7, 2005.

\*Technical data source: 133010, White.

## GENERAL SURFACE PREPARATION/APPLICATION

**SURFACE PREPARATION:** Surface must be like new, clean, dry, and free from silicone, asphalt, and loose or foreign materials.

**APPLICATION:** Only apply when surface and air temperatures are above 5°C (41°F). Do not apply on surfaces that exceed 30°C (86°F) or when rain is expected in the next 12 hours. Product must be above 10°C (50°F) and should be below 30°C (86°F) when applied. Cut nozzle tip at a 90° angle and leave an orifice that will allow a bead between 6 and 10 mm in width. Pierce the seal inside the nozzle. Use a caulking gun and apply a uniform, convex bead, pulling the gun away from the bead as shown. The angle of the caulking gun should be approximately 45°. Make sure the sealant makes at least 3 mm (1/8 in.) contact with each surface of the joint. Do not tool the bead to avoid defects during drying.



As gap filler on a wall, fill the crack and smooth it out with a damp cloth or putty knife within 10 minutes.

Can be painted with a latex paint 24 hours after application. Some flat paints may crack, when applied on a latex-based caulking; a semi-gloss paint is recommended.

**Note for the clear:** The sealant is white when applied and becomes clear while drying. It could whiten if exposed to excessive humidity. It will become clear again while dry.

**CLEANUP:** Clean with warm, soapy water.

**DISPOSAL:** Consult your municipality about proper disposal procedure of residue in accordance with the laws and respect the environment.

**PERMISSIBLE TEMPERATURES DURING APPLICATION:**

Material:	10 to 30°C	50 to 86°F
Ambient:	5 to 30°C	41 to 86°F
Substrate:	5 to 30°C	41 to 86°F

## PRECAUTIONS

**MAY BE HARMFUL IF SWALLOWED. MAY CAUSE EYE AND SKIN IRRITATION.** Avoid breathing vapours, spray or mists. Avoid contact with skin and eyes. Wear protective gloves/clothing and eye/face protection. Keep out of reach of children. **Note: These warnings encompass the product series. Prior to use, read and follow product-specific SDS and label information. FIRST AID TREATMENT:** If swallowed, call a Poison Control Centre or doctor immediately. If in eyes or on skin, rinse well with water. If breathed in, move person to fresh air. Contains: Naphtha (petroleum), hydrotreated heavy; limestone; ethanediol; crystalline silica, respirable powder (<10 microns); titanium dioxide; crystalline silica, respirable powder (>10 microns). Sanding and grinding dusts may be harmful if inhaled. Inhalation of high concentrations of vapour may affect the central nervous system. Repeated exposure to high vapour concentrations may cause irritation of the respiratory system and permanent brain and nervous system damage. High vapour concentrations can cause headaches, dizziness, drowsiness and nausea and may lead to unconsciousness. This product contains crystalline silica which can cause lung cancer or silicosis. The risk of cancer depends on the duration and level of exposure to dust from sanding surfaces or mist from spray applications. Contains isothiazolinones. May cause allergic reaction. Keep container tightly closed and sealed until ready for use. For workplace use, an SDS is available from your retailer or by calling 1-800-463-7426 (Canada). EMERGENCY SPILL INFORMATION: (412) 434-4515 (U.S.), (514) 645-1320 (Canada).

**LIMITED WARRANTY:** This product is covered by a Limited Warranty. For details, visit [www.mulco.ca/en-ca/limited-warranty](http://www.mulco.ca/en-ca/limited-warranty) or call 1-866-660-2220.

The PPG Logo is a registered trademark of PPG Industries Ohio, Inc. Mulco is a registered trademark of AkzoNobel.

PPG Architectural Finishes, Inc. believes the technical data presented is currently accurate: however, no guarantee of accuracy, comprehensiveness, or performance is given or implied. Improvements in coatings technology may cause future technical data to vary from what is in this bulletin. For complete, up-to-date technical information, call 1-866-660-2220.

